

# Highway 1416 Sanitary Sewer – Construction Update

11/06/2025

Project Summary: Upsize the sanitary sewer line from about Cottonwood Ave to West Gate Rd in the Highway 1416 median to support the growth of Box Elder

Contractor: H&W Contracting, LLC, Sioux Falls, SD  
John Rennich, 605.339.8834

Engineer: KLJ Engineering, Rapid City, SD  
Tim Hartmann, 605.872.5004

November 3<sup>rd</sup> to November 8<sup>th</sup>:

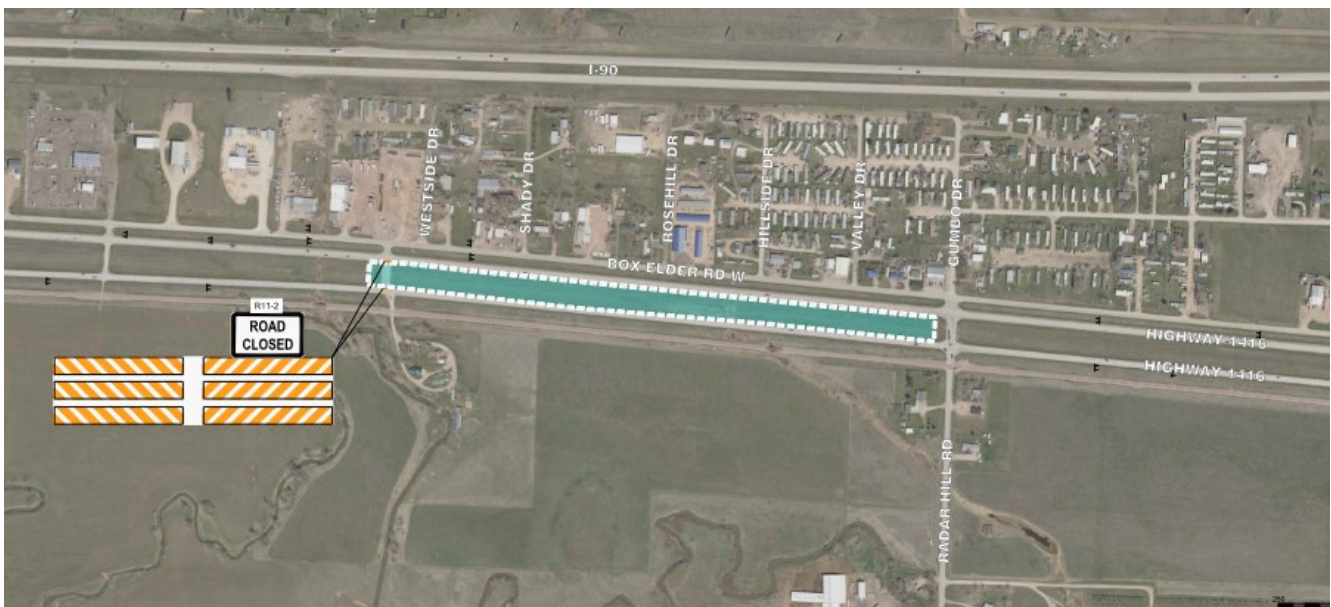
- Work continues in the Highway 1416 median, between the Radar Hill Road and nearing the Westside Drive crossing.
- Work will include activities next to Highway 1416, but all lanes will remain open.
- Work is anticipated to be approaching the Westside Drive crossing, however no road closures are anticipated during this week.

November 17<sup>th</sup> to November 22<sup>nd</sup>:

- Work begins in the first part of the week in the Highway 1416 median, near the Westside Drive crossover.
- Important Note – Westside Drive and Highway 1416 crossover will tentatively be closed beginning Tuesday, November 18<sup>th</sup> for a duration of approximately 7 days.
  - The Westside Drive crossover will be closed to traffic.
    - A detour will not be established for this closure. Any vehicles needing use of this detour should proceed to the next available crossover.

---

Work Area – November 17<sup>th</sup> to November 22<sup>nd</sup>:



Work Area – November 10<sup>th</sup> to November 15<sup>th</sup>:

